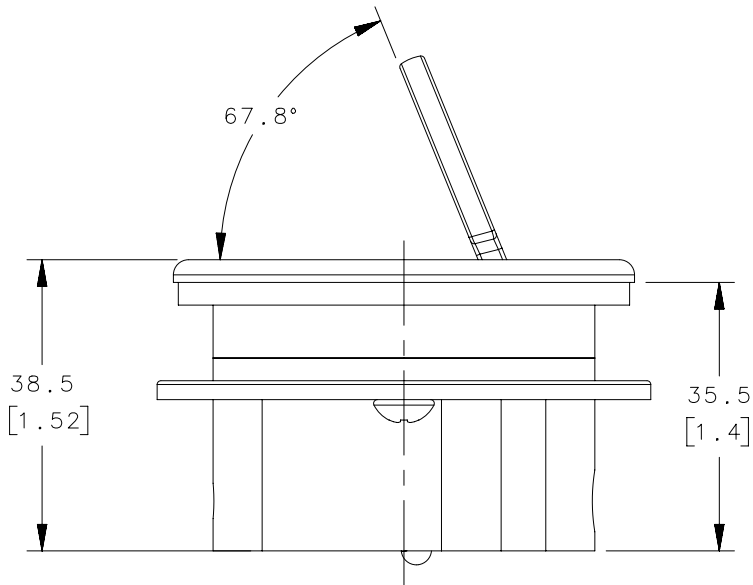
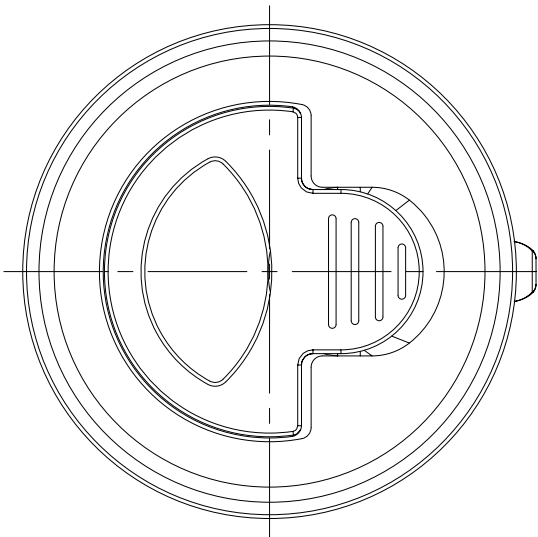
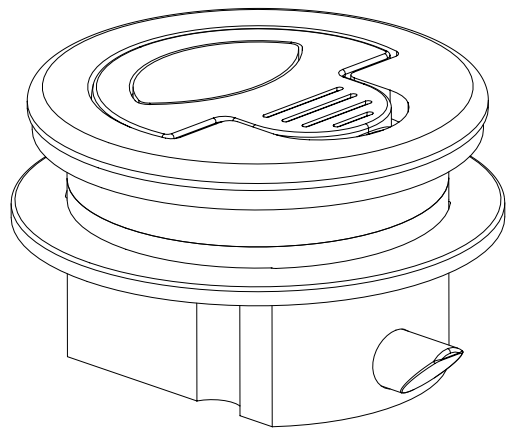


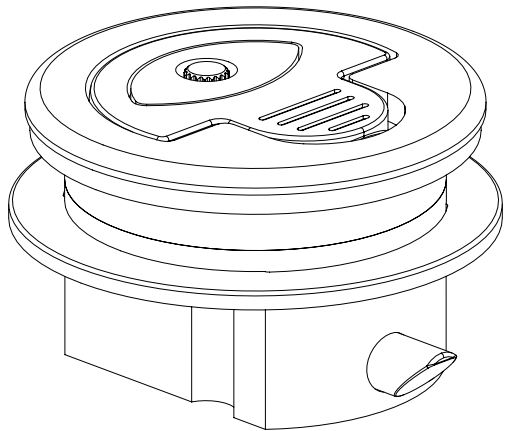
REVISION HISTORY			
REV	DATE	BY	DESCRIPTION
D	24JAN2012	DMS/YGC	PRN: P2012-0111



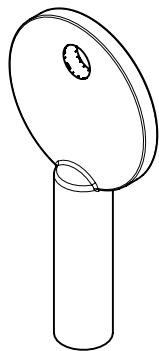
UNLATCHED



NON-LOCKING

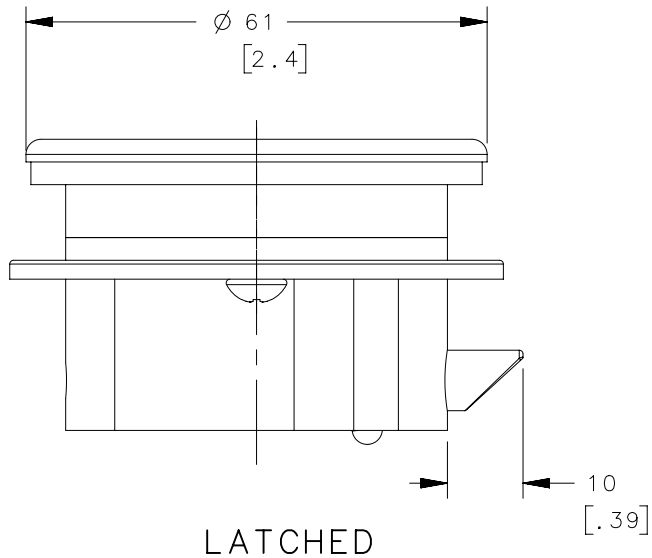


LOCKING

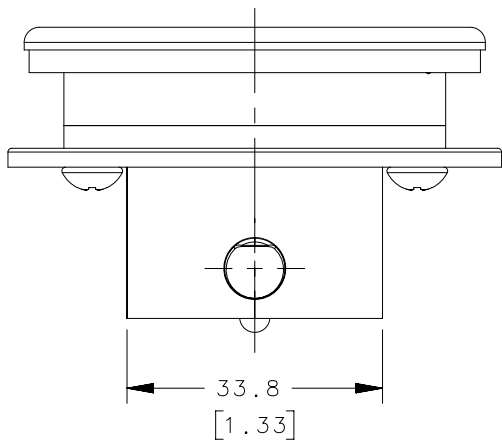


- NOTES:
- A.MATERIAL AND FINISH:
- 1.D-HANDLE, TOP HOUSING - CF-8M STAINLESS STEEL (NOMINAL CAST EQUIVALENT OF 316 STAINLESS STEEL), POLISHED.
 - 2.SPLINE LOCK PLUG, ACTUATOR, - CF-8M STAINLESS STEEL (NOMINAL CAST EQUIVALENT OF 316 STAINLESS STEEL), PASSIVATED.
 - 3.LOCKING ARM, U-BENT WASHER, - 304 STAINLESS STEEL, PASSIVATED.
 - 4.KEEPER - 304 STAINLESS STEEL, POLISHED.
 - 5.O-RING AND GASKET - BUNA-N, BLACK.
 - 6.KEY - BRASS, CHROME PLATED.
 - 7.HOUSING AND SPACER, FOR PART NUMBER -2 -NYLON.
 - FOR PART NUMBER -8 -HOUSING:CF-8M STAINLESS STEEL (NOMINAL CAST EQUIVALENT OF 316 STAINLESS STEEL), PASSIVATED.
 - SPACER:304 STAINLESS STEEL, POLISHED.
- B.SUPPLIED WITH STRIKER M5-C-601-8.
- C.SUPPLIED WITH KEY M7-88-9121324-S FOR LOCKING VERSIONS.

ASSEMBLY (LOCKING)	M5-21-100-8	SEE NOTE A	SEE NOTE A
ASSEMBLY (NON-LOCKING)	M5-21-000-8	SEE NOTE A	SEE NOTE A
ASSEMBLY (LOCKING)	M5-21-100-2	SEE NOTE A	SEE NOTE A
ASSEMBLY (NON-LOCKING)	M5-21-000-2	SEE NOTE A	SEE NOTE A
ITEM	SOUTHCO PART NUMBER	MATERIAL	FINISH



LATCHED



THIRD ANGLE PROJECTION					
	MILLIMETERS [IN]			CONNECT • CREATE • INNOVATE	
	TOLERANCES UNLESS OTHERWISE NOTED			DESCRIPTION	
PROPRIETARY ITEM EXCEPT FOR USES EXPRESSLY GRANTED IN WRITING, INFORMATION DISCLOSED HEREON IS CONFIDENTIAL AND ALL RIGHTS, PATENT AND OTHERWISE, ARE RESERVED BY SOUTHCO, INC.	ALL DIMENSIONS WITHOUT TOLERANCES ARE FOR REFERENCE ONLY.			SLAM LATCH-WATER PROOF STAINLESS STEEL	
	SIZE	SYSTEM	DWG NO.	J-M5-21-000	
	A3	NX			
PER ASME Y14.5M-1994		DRAWN BY	DATE	SCALE	SHEET
		VMV/VGV	04 APR 2008	1:1	1 OF 1